



Wireless Earbuds

USER MANUAL

FUSION

V1.04

Packing List



x1



x1



x2



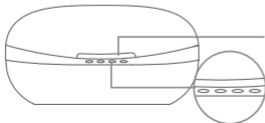
x2



x1

Product Overview

Charging Case

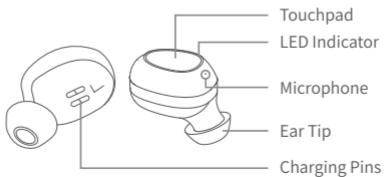


Opening Slot

LED Indicators



Earbuds

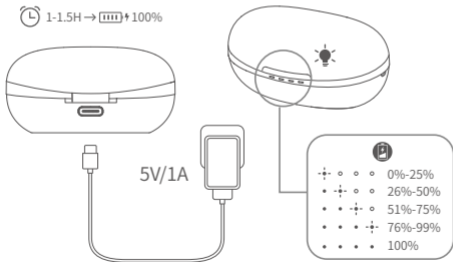


Charge

Fully charge the **Charging Case** and earbuds before your first use.

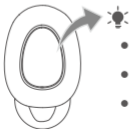
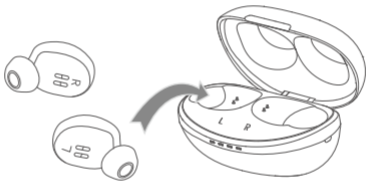
Charging Case

Connect the **Charging Case** to a compatible adapter (not included) with the **Type-C Cable**, then plug the adapter into a socket.



Earbuds

Align the **Charging Pins** on the earbuds with those in the case, then place the earbuds into the case until it magnetically snaps into the **Charging Slot**.

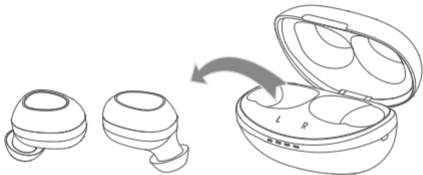


- **Charging:** pulse red
- **Fully Charged:** solid blue for 5 seconds, then be off
- **Low Battery:** flash red twice for every 5 seconds

Power On

Option 1

Open the **Charging Case** and take the earbuds out to power on.



Option 2

When the earbuds are not in the case and in power-off status, touch and hold the **Touchpad** for 1 second to power on.



Pair

Step 1

When the **LED Indicator** on one earbud flashes red and blue alternately, while the other flashes blue twice every 5 seconds, pair the earbuds with your mobile device within 60 seconds.

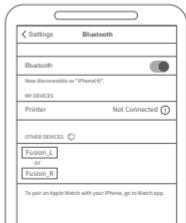
Tip:

When there is no earbud flashing red and blue alternately, place the earbuds back into the case and take them out again.

Step 2

Enable Bluetooth on your device, then search and connect to **Fusion_L/Fusion_R**.

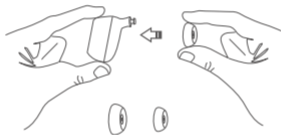
After connecting to **Fusion_L** or **Fusion_R**, a pairing request for another earbud will be automatically displayed on the phone. Select 「**Pair**」 to pair another earbud.



The LED Indicators on the earbuds pulse blue once for every 3 seconds and you will hear "Connected" from the earbuds if the connection is successful.

Wear the Earbuds

If the ear tips don't fit your ears, you can replace them with the new ones we provided.





Fit the earbuds into your ears.






Functions



Volume

 Volume Up	Tap the Touchpad of the Right(R) Earbud twice
 Volume Down	Tap the Touchpad of the Left(L) Earbud twice

Music

 Play/Pause	Tap the Touchpad of either earbud once
 Previous	Touch and hold the Touchpad of the Left(L) Earbud for 2 seconds
 Next	Touch and hold the Touchpad of the Right(R) Earbud for 2 seconds

Call

 Accept/End	Tap the Touchpad of either earbud once
 Decline	Touch and hold the Touchpad of either earbud for 2 seconds

Activate Voice Assistant

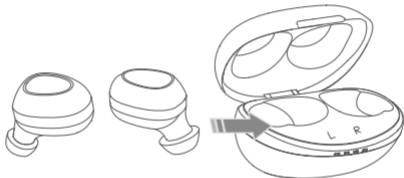


When you're not listening to music or watching videos, tap the Touchpad of either earbud for 3 times to wake up voice assistant.

Power Off

Option 1

Place the earbuds back into the case to automatically power off.



Option 2

Touch and hold the Touchpad for 5 seconds to power off the earbuds.

Option 3

If there is no connection with a Bluetooth device within 3 minutes after powering on, the earbuds will automatically power off.

Reset

When your mobile phone can't be paired with the earbuds, place two earbuds into the **Charging Case**, then simultaneously touch and hold the **Touchpad** of two earbuds for 5 seconds until the **LED Indicators** on the earbuds flash blue once, which indicates the earbuds have been reset successfully..

Specification

Power Supply	5V ---0.5A
BT Version	V5.0
Frequency Range	2402~2480MHz
Transmit Power (EIRP)	<10dBm (for CE)
Battery Capacity of the Charging Case	350mAh
Charging Time for the Earbud	30 Minutes
Charging Time for the Charging Case	1-1.5 Hour(s)
Playtime	Up to 6 Hours (with 50% volume)

FCC Caution

Any Changes or modifications not expressly approved by the party responsible for compliance could void the user's authority to operate the equipment.

This device complies with part 15 of the FCC Rules. Operation is subject to the following two conditions:

- (1) This device may not cause harmful interference, and
- (2) this device must accept any interference received, including interference that may cause undesired operation.

NOTE:

This equipment has been tested and found to comply with the limits for a Class B digital device, pursuant to part 15 of the FCC Rules.

These limits are designed to provide reasonable protection against harmful interference in a residential installation.

This equipment generates, uses and can radiate radio frequency energy and, if not installed and used in accordance with the instructions, may cause harmful interference to radio communications. However, there is no guarantee that interference will not occur in a particular installation.

If this equipment does cause harmful interference to radio or television reception, which can be determined by turning the equipment off and on, the user is encouraged to try to correct the interference by one or more of the following measures:

- Reorient or relocate the receiving antenna.
- Increase the separation between the equipment and receiver.
- Connect the equipment into an outlet on a circuit different from that to which the receiver is connected.
- Consult the dealer or an experienced radio/TV technician for help.

This equipment complies with FCC radiation exposure limits set forth for an uncontrolled environment. This transmitter must not be co-located or operating in conjunction with any other antenna or transmitter.

FCC ID: 2AQ3A-FUSION

ISED Warning

This device complies with Industry Canada licence-exempt RSS standard(s). Operation is subject to the following two conditions:

- (1) this device may not cause interference, and
- (2) this device must accept any interference, including interference that may cause undesired operation of the device.

Le présent appareil est conforme aux CNR d'Industrie Canada applicables aux appareils radio exempts de licence. L'exploitation est autorisée aux deux conditions suivantes:

- (1) l'appareil ne doit pas produire de brouillage, et
- (2) l'utilisateur de l'appareil doit accepter tout brouillage radioélectrique subi, même si le brouillage est susceptible d'en compromettre le fonctionnement.

The device is compliance with RF exposure guidelines, users can obtain Canadian information on RF exposure and compliance.

Le présent appareil est conforme Après examen de ce matériel aux conformité ou aux limites d'intensité de champ RF, les utilisateurs peuvent sur l'exposition aux radiofréquences et la conformité and compliance d'acquérir les informations correspondantes.

IC:24268-FUSION

CAUTION

RISK OF EXPLOSION IF BATTERY IS REPLACED BY AN INCORRECT TYPE.

DISPOSE OF USED BATTERIES ACCORDING TO THE INSTRUCTIONS

This product bears the selective sorting symbol for Waste electrical and electronic equipment (WEEE).

This means that this product must be handled pursuant to European directive 2012/19/EU in order to be recycled or dismantled to minimize its impact on the environment.

NOTES:



1. High Sound Pressure
2. Hearing Damage Risk
3. Do not listen at high volume levels for long periods.

Manufacturer:

Shenzhen VanTop Technology & Innovation Co., Ltd.

Manufacturer address:

502, 5th Flr. BLDG 4, MinQi Technology Park, No. 65 Lishan Road,

Taoyuan Street, Nanshan District, Shenzhen, China



EC

REP

C&E Connection E-Commerce (DE) GmbH

Zum Linnegraben 20, 65933,

Frankfurt am Main, Germany

Info@ce-connection.de

Cystereo Support

North America: support@cystereo.com

United Kingdom: support.uk@cystereo.com



www.cystereo.com



[@cystereo](https://www.instagram.com/cystereo)



[@cystereo](https://www.facebook.com/cystereo)